

WEIGHT 0 oz (- g) CABLES : -

CHARACTERISTICS

NOMINAL IMPEDANCE	50	Ω
FREQUENCY RANGE	0-18	GHz
TEMPERATURE RATING	-65/+125	°C
VSWR	1.05 x .004	Max
RF INSERTION LOSS	-	F dB Max
VOLTAGE RATING	335	Vrms Max
DIELECTRIC WITHSTANDING VOLTAGE	1000	Vrms min
INSULATION RESISTANCE	5000	M ohms min
HERMETIC SEAL	-	cc/s Atm.cm3/s
LEAKAGE (pressurized only)	-	psi MPa

STANDARDISATION

CABLE RETENTION	112.51	lb min
CENTER CONTACT RETENTION	500	N
Axial force - mating end	0	lb min
Axial force - opposite end	0	lb min
Torque (Min)	0	Inch.oz cm.N
RECOMMENDED TORQUES		
Mating	0	inch.lb cm.N
Panel nut	0	inch.lb cm.N
Clamp nut	0	inch.lb cm.N

CONSTRUCTION

CONNECTOR PARTS	MATERIALS	FINISH
BODY	STAINLESS STEEL	GOLD
OUTER CONTACT	-	-
CENTER CONTACT	LIBE2	GOLD
INSULATOR	PTFE	-
FLANGE	STAINLESS STEEL	GOLD
-	-	-
-	-	-
-	-	-
-	-	-

ISSUE	REVISION No	DESCRIPTION	BY	DATE
.
.
.

Initiated on 23/12/92

Superseded on - - -

The information given here is subject to change without notice. Design changes may be in order to improve the product.

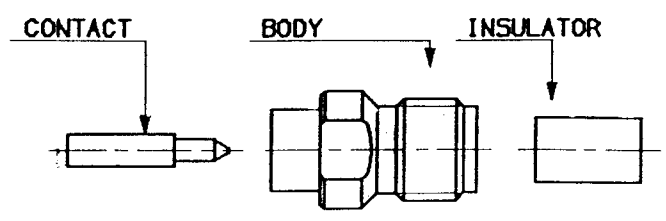


STRAIGHT JACK DIRECT SOLDER TYPE

CABLE . 141

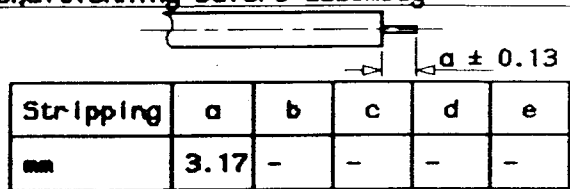
Tool kit R282 120

- Assembly jig : Repere 10
- Positioner 1 : Repere 15
- Solder gauge : Repere 62
- Positioner 2 : Repere 85
- Dielectric recess gauge : Repere 92
- Dielectric recess tool : Repere 95
- Female dielectric insert tool : Repere 33
- Dielectric plunger : Repere 35

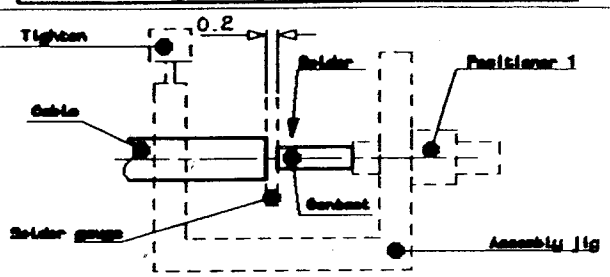


We recommend a cable thermal preconditioning before assembly

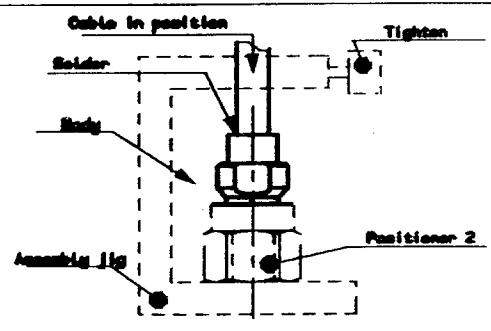
- ①
- 1-1 Strip the cable
 - Stripping tool R 282 053
 - Positioner R 282 067



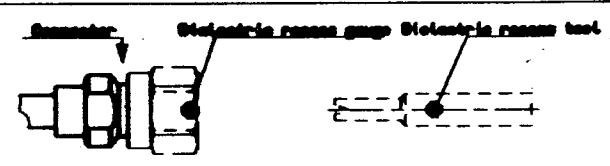
- ②
- 2-1 Screw the positioner 1 onto the assembly jig
 - 2-2 Slide contact into positioner 1
 - 2-3 Insert solder gauge between contact and cable
 - 2-4 Tighten
 - 2-5 Solder the contact



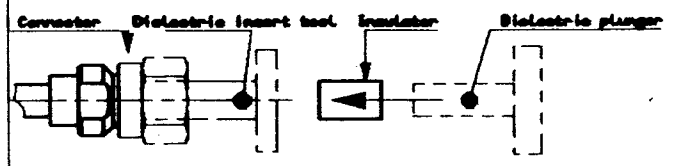
- ③
- 3-1 After cooling remove cable assembly from the jig
 - 3-2 Screw positioner 2 into the connector
 - 3-3 Slide cable into the connector until it bottoms against positioner 2
 - 3-4 Tighten
 - 3-5 Put 3 rings of solder around the cable and solder



- ④
- 4-1 After cooling remove cable assembly from the jig
 - 4-2 Screw dielectric recess gauge and trim dielectric



- ⑤
- 5-1 Screw female dielectric insert tool onto connector and insert insulator with the dielectric plunger



IND	No MODIF	OBJET	VISA	DATE

Creation Date 19.FEV.93
Mise a jour Date

Ces renseignements sont donnés à titre indicatif. Sans le but constant d'améliorer nos produits, nous nous réservons le droit d'apporter toutes modifications jugées utiles.



191, Rue Ph. Hoffmann - Z.I. Ouest
93116 ROCHY/S/BOIS Cedex (France)
Tel. : (1) 48 54 88 49
Fax : (1) 48 54 83 88
Telex: Radia A 220678 F